



**Signature
Rail**

Welcome!

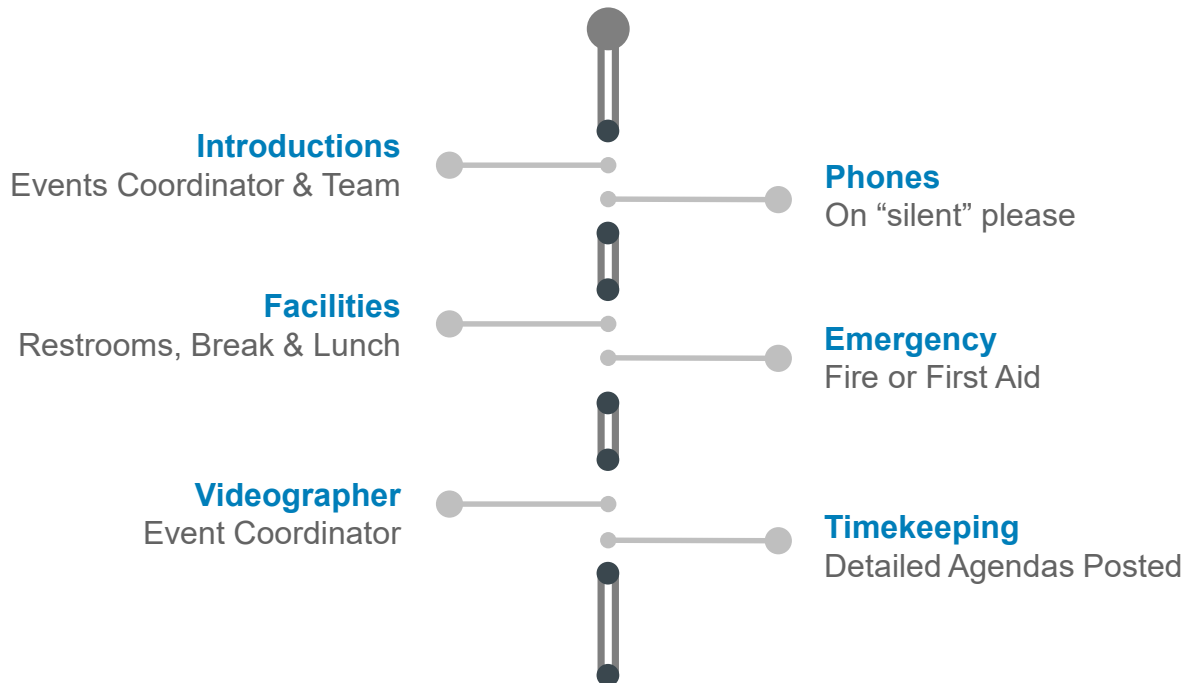


User Conference 2019

Innovation & Product Roadmap



Housekeeping





Welcome!

□ This conference is all about you!

- ✓ Take the opportunity to interact with solutions experts
- ✓ Shape the future of our solution suite
- ✓ Help develop the services we offer



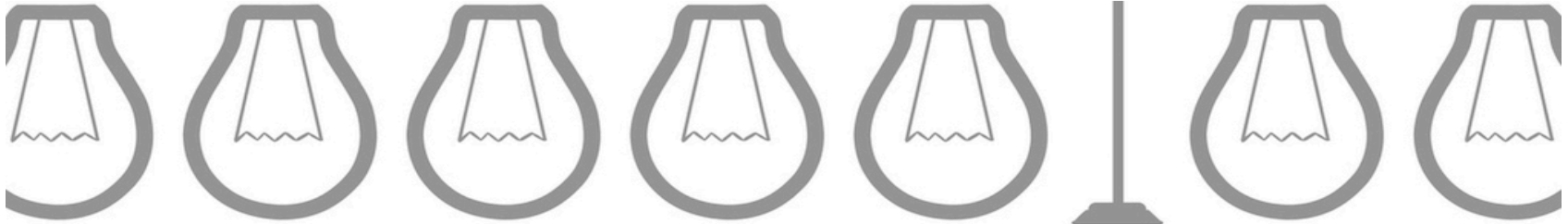


Innovation

Driving innovation through Partnerships



Innovation through Partnerships



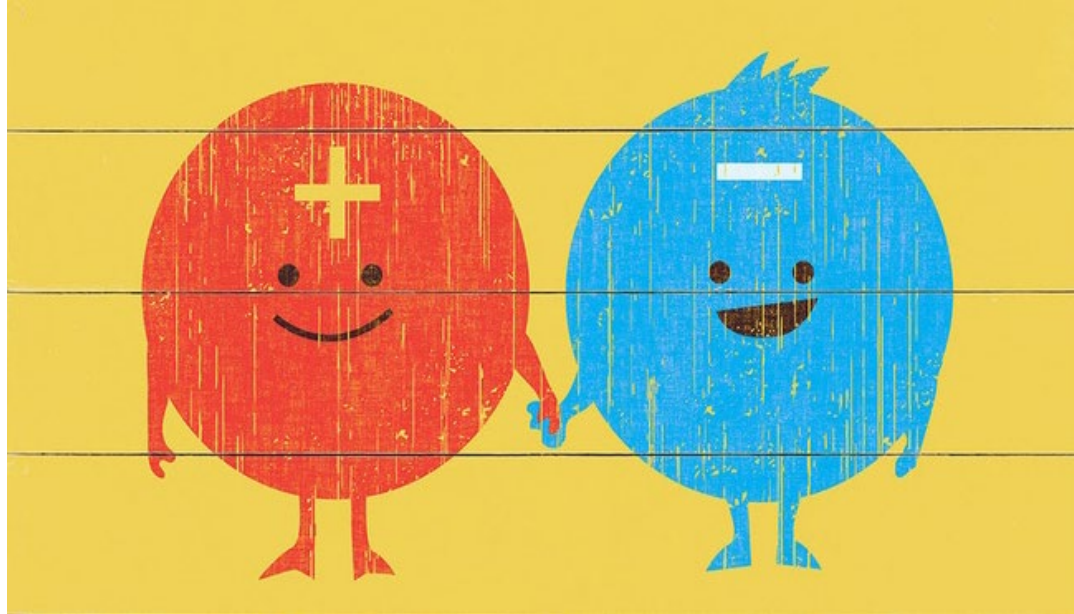
You create a safe environment where new and innovative ideas flourish.

- ✓ Different Capabilities
- ✓ Different Insights
- ✓ Different Cultures
- ✓ Across Disciplines





Opposites Attract



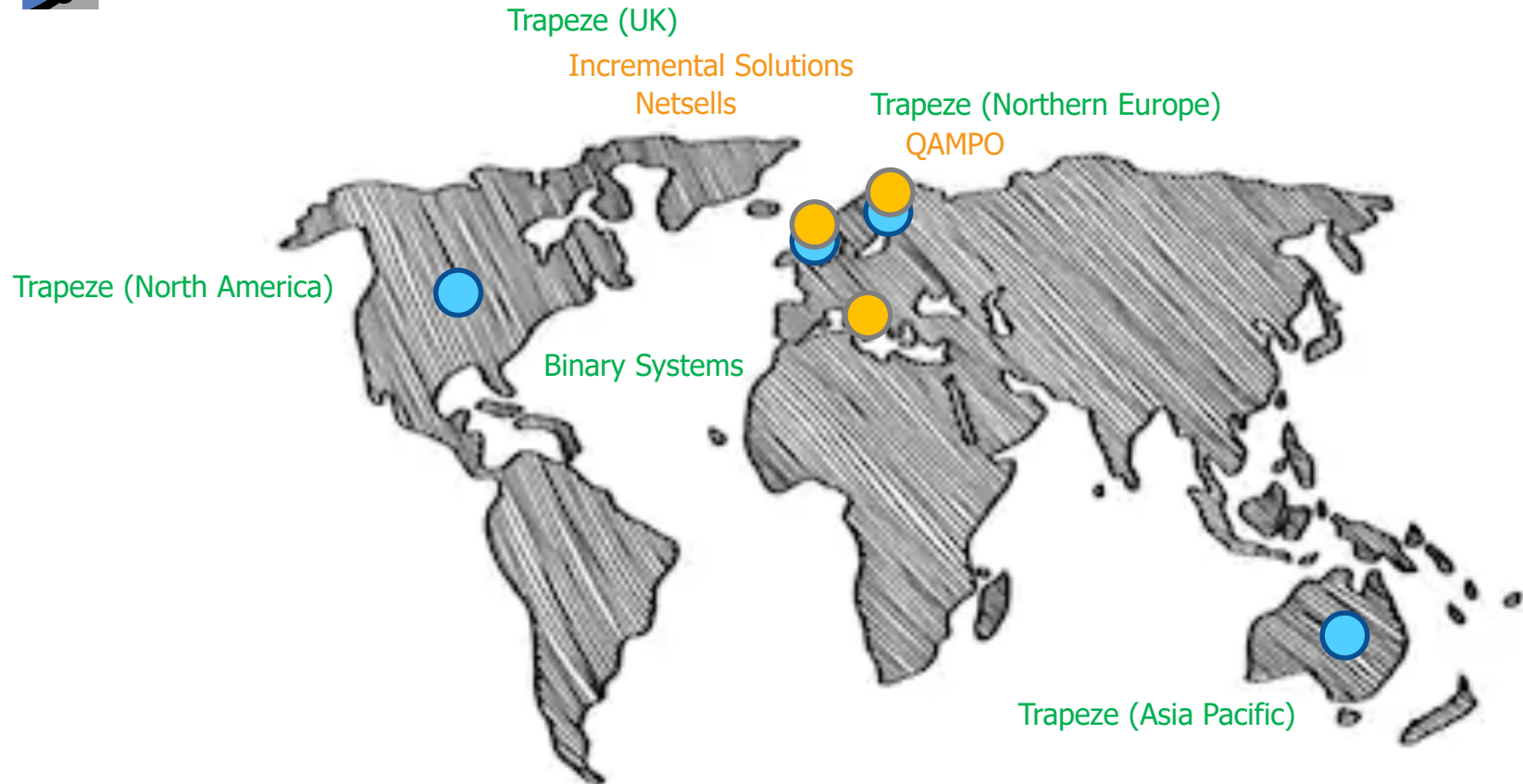
Align with others who are “usefully different”.



Build something that none of us could accomplish alone!



Active Markets & Partners





**Signature
Rail**

Products & Roadmap

Looking back and Looking forward



Product Roadmap

Simulation

☐ Layout Editor

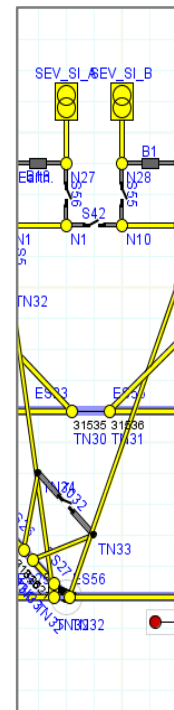
- ✓ Supports Large Models

☐ Enterprise Licensing

- ✓ Goodbye Dongles!

☐ *Data Exchange (Validate TT against Infra)*

☐ *Reporting*

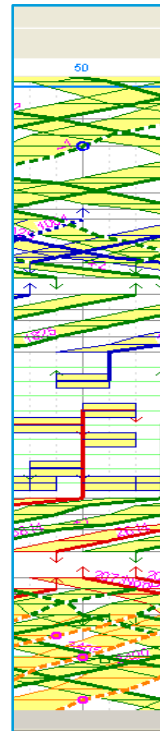




Product Roadmap

TrainPlan / ResourcePlan

- ☐ 32-Bit / 64-Bit
- ☐ Continued to tighten Integration with Duty Manager
- ☐ Vehicle / Crew Optimisation (Holistic Solutions)
- ☐ NeTeX Interfacing (Norway)
 - ✓ Exchanging Public Transport Information as XML
- ☐ Real-Time Performance Data
 - ✓ Import and Display
 - ✓ *Soft Validation for Robust Planning*
- ☐ Business Intelligence
 - ✓ Customer Led
 - ✓ Exportable





Product Roadmap

TrainPlan / ResourcePlan – Cont'd

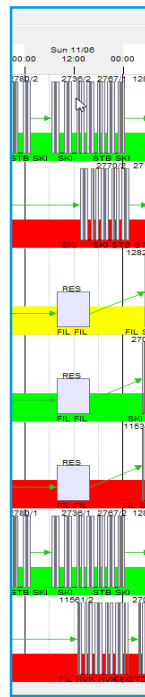
Decision Science

- ✓ Combined Vehicle & Crew
- ✓ Yard Optimisation

Bid Support Module

Decision Support for Performance Data

Move to Cloud Engagement (Netsells)

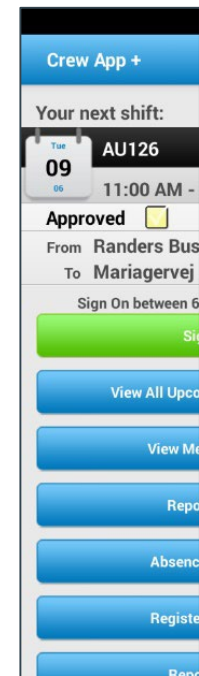




Product Roadmap

Duty Manager / Crew Web / Crew App

- ❑ Real-time Crew Delay
- ❑ FAID
 - ✓ Fatigue Support
- ❑ Bid / Offer
 - ✓ Support for Union Management

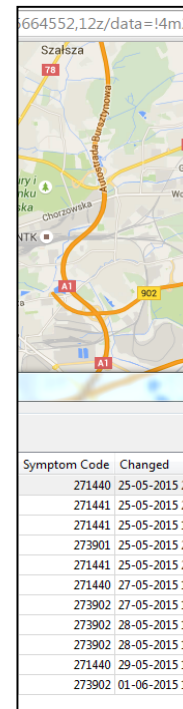




Product Roadmap

Duty Manager / Crew Web / Crew App – Cont'd

- ☐ *New CrewApp*
 - ✓ Current has 28,000+ daily users
- ☐ *New CrewWeb*
- ☐ *Employee Swap*
- ☐ *Increased FAID Support*



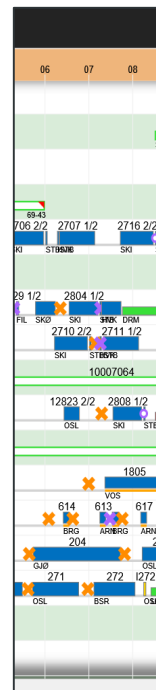
Symptom Code	Changed
271440	25-05-2015 20
271441	25-05-2015 20
271441	25-05-2015 10
273901	25-05-2015 20
271441	25-05-2015 20
271440	27-05-2015 10
273902	27-05-2015 10
273902	28-05-2015 10
273902	28-05-2015 10
271440	29-05-2015 10
273902	01-06-2015 10



Product Roadmap

ResourceManager

- Action Cards
- Route Generation
- Data, data and more data!
- Re-Platforming Rolling Stock Register
- Continued to extend the solution
(and more will come in 2020)

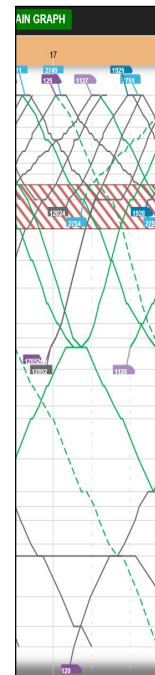




Product Roadmap

ResourceManager

- ☐ *Integration with Infrastructure Owners*
 - ✓ *Ordering train changes for Bane NOR / Trafikverket*
- ☐ *Action Card Editor*
- ☐ *Stabling Capacity Management (FMS)*
- ☐ *Integrated Crew Information*
- ☐ *Continued extension of the solution...*





Thank You!